

eye pet vac<sup>®</sup>  
TOUCHLESS VACUUM



# User Manual

## IMPORTANT SAFETY INSTRUCTIONS

This electrical appliance must always be used according to the following safety instructions. Save these instructions as this manual contains important safety and operating information. A copy of the user manual can also be found on our website at <https://eyevac.com/faq/#manuals>. When using an electrical appliance, basic precaution should always be followed, including the following:

### READ ALL INSTRUCTIONS CAREFULLY BEFORE USING THIS APPLIANCE:

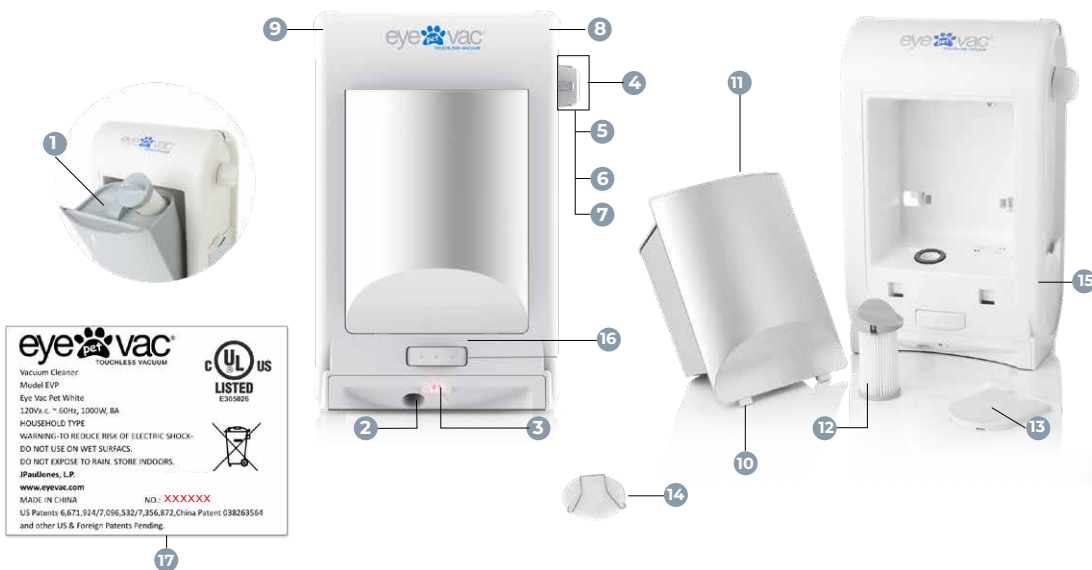
#### To reduce the risk of fire, electric shock or injury:

1. Always turn the control dial to the Off position before unplugging EyeVac Pet.
2. Always unplug the appliance before cleaning or servicing it. Do not unplug by pulling the cord; to unplug, grasp the plug, not the cord.
3. Do not let the EyeVac Pet be used as a toy. Close attention is necessary when used near children. Do not use in Auto Mode or leave appliance plugged in near children, infants or small animals.
4. Do not pull or carry the appliance by the cord. Do not run the appliance over the cord, close a door on the cord, or pull the cord around sharp edges or corners. Keep the cord away from heated surfaces.
5. Do not use the appliance if the cord or plug is damaged.
6. Do not handle the plug or appliance with wet hands or use on wet surfaces.
7. Do not expose to rain.
8. Do not use appliance to dispose of water or damp materials such as mud, tile grout, plaster filler, or caulking. Do not use to pick up any liquid or wet objects.
9. Do not use appliance to vacuum up flammable or combustible liquids, such as gasoline. Do not use in areas where these liquids may be present.
10. Do not use this appliance to vacuum up burning or smoking materials, such as cigarettes, matches or hot ashes.
11. Keep hair, loose clothing, and all parts of the body, especially fingers, away from openings and moving parts.
12. Do not put any objects into appliance openings or use with any openings blocked or plugged.
13. Do not use this appliance to pick up hard or sharp objects or other large surface litter. Pick these up by hand before vacuuming.
14. Use the appliance only as described in this User Manual.
15. Turn appliance off and unplug before removing or replacing the Canister or Filter.
16. Turn appliance off and unplug before cleaning or maintenance.
17. If the appliance is not working as it should, visit <https://eyevac.com/connect/> and fill out the "Service Request" form. Do NOT attempt to repair, as it will invalidate your warranty.
18. When cleaning the outside of the appliance, wipe with a damp cloth to reduce the static electricity on the outer surface.
19. Other than cleaning the Pre-Motor Filter, Exhaust Filter and Vent Filter, replacing them as described in this User Manual, this EyeVac Pet is not user serviceable. There are no user serviceable parts inside the unit. Servicing is required by JPaulJones, LP to avoid damage to internal components.
20. Do not operate without all Filters, Canister, and Lid in properly in place.
21. EyeVac Pet is appropriate and warranted for COMMERCIAL or HOME USE.

**WARNING! To reduce the risk of electric shock, do not use on wet surfaces. Do not expose to rain. Store indoors**

## DESCRIPTION OF EYEVAC PET

Save These instructions



**1. Canister Lid**

**2. Inlet**

**3. Sensors**

**4. Control Dial (located on side of unit)**

**5. Auto Mode**

**6. Manual Mode**

**7. Off Position**

**8. Status Indicator Light**

**9. Canister Full indicator Light**

**10. Canister Tabs**

**11. Canister**

**12. Pre-Motor Filter (and screen)**

**13. Exhaust Filter**

**14. Vent Filter**

**15. Exhaust Filter Housing**

**16. Manual Activation Button**

**17. Serial Number (located on back of unit)**

## BEFORE USING FOR THE FIRST TIME

1. Remove EyeVac Pet from packaging and set upright on any non-carpeted flooring. Remove packing tape from Exhaust Filter on the side of the unit.
2. Plug unit into any standard 120V(US) AC electrical outlet.

**NOTE: EYEVAC PET CANNOT BE USED WITH A CONVERTER OR ADAPTER**

3. Turn the Control Dial to the Manual position for manual operation or to the Auto position for automated use. The status Indicator Light will illuminate when the Control Dial is in either of these positions. Your EyeVac Pet is now ready for use.
4. EyeVac Pet is appropriate and warranted for COMMERCIAL or HOME USE.

## GROUNDING INSTRUCTIONS

This appliance must be grounded. If it should malfunction or breakdown, grounding provides a path of least resistance for electric current to reduce the risk of electric shock. This appliance is equipped with a cord having an equipment-grounding conductor and grounding plug. The plug must be inserted into an appropriate outlet that is properly installed and grounded.

## OPERATING THE VACUUM: INSTRUCTIONS

**NOTE: EYEVAC PET cannot operate when the Control Dial is in the Off position.**



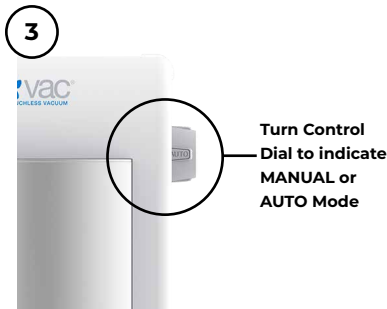
1

Open the Canister and ensure the Pre-Motor Filter is aligned properly locked into place and flush with the Canister Lid. Then close the Canister.



2

Plug in your EyeVac Pet in the desired location.



3

Turn Control Dial to the Auto Position. A blue indicator light will show when EyeVac Pet is powered on. Turn Control Dial again to select Manual Mode.



4

Sweep debris over to the EyeVac Pet. If in Auto Mode, the sensor will detect sweeping motion and automatically vacuum debris. If in Manual Mode, simply tap the Manual Activation Button to activate.



5

As debris accumulates, the Canister will need to be emptied. A red Indicator Light lets you know when its time to empty the Canister.

## USER MAINTENANCE INSTRUCTIONS

1. To empty the EyeVac Pet Canister, turn the control dial to the Off position and unplug the unit.
2. Pull the Canister outward from the front of the Bin Cavity. Grasp the Canister Grip firmly and lift it out and away from the EyeVac Pet Main Unit.
3. Holding the Canister firmly with one hand, grasp the Canister Lid Handle with the other hand and pull the Lid straight up and out to remove.
4. Turn the Canister upside down over a trash can. Make sure you empty all dirt and debris from inside and below the Bin. To ensure that all the dirt spills out, tap the side of the Canister gently against the edge of the trash can. Re-attach the Canister Lid to the top of the Canister.
5. Clean Sensors, Inlet area, Canister, Canister Lid and Canister Cavity with a damp rag or towel. Do not use soap or alcohol to clean sensors.
6. After all parts are fully dried, insert the assembled Canister with Lid fitted snugly into position and Pre-Motor Filter locked into place and flush with Canister Lid. The 2 grooves in the bottom of the Bin fit easily over the rod in the front of the unit. Grasp the Canister Grip and lock the Canister back into position.

**NOTE: Make sure all parts are completely dry before reassembly.**

**HEALTH TIP: If you suffer from allergies or asthma, take the Canister outdoors to empty. As you empty the dirt into the trash can, gently tap the Canister against the side of the can to remove loose debris.**

## CLEANING THE PRE-MOTOR FILTER

To maintain optimal performance, the Pre-Motor Filter will need cleaning whenever the suction is not strong. The Pre-Motor Filter must be clean and free of elements, which might hinder the flow of air.

1. Turn the control dial to the Off position and unplug the unit.
2. Pull the Canister outward from the front of the Bin Cavity. Grasp the Canister Grip firmly and lift it out and away from the EyeVac Pet Main Unit. Locate the Pre-Motor Filter Handle. Before washing the Pre-Motor Filter please remove the screen and rinse with warm water, leave it out to dry, and replace the screen before operating.
3. Remove the Pre-Motor Filter by grasping the Filter Handle and turn counter-clockwise to the unlock position. Pull Filter straight up and out of the top of the Canister. Rinse under running water to clean. If needed a mild soap and soft bristled brush can also be used.

**IMPORTANT! Dry thoroughly before use.**

4. Slide the Pre-Motor Filter back into the top of the Canister. Rotate clockwise to the "lock" position. Put the Canister back into place.
5. If a new Filter is needed, replace with standard filter cartridges. Make sure that it fits snugly in the Filter Housing. Replacement Filters are available through the Customer Service Department.

**IMPORTANT! NEVER OPERATE THE EYEVAC PET WITHOUT THE PRE-MOTOR FILTER PROPERLY IN PLACE.**

## CLEANING THE EXHAUST FILTER

1. The Exhaust Filter slides up and out of its housing on the side of the unit.
2. Gently pull the Filter out of the Filter Holder.
3. Tap Filter gently against trash container to free and eliminate excess dirt and debris.
4. To clean the Filter, wash in mild soap and water; rinse and **dry thoroughly** before assembly
5. Slide the Exhaust Filter back into the unit with the Filter facing outwards.

## CLEANING THE VENT FILTER

1. Turn Control Dial to the Off position and unplug the unit.
2. Remove the Canister carefully. The Vent Filter is located underneath it.
3. Gently squeeze spring inward and lift to remove spring. Gently lift and remove vent filter.
4. To clean the Filter, wash in mild soap and water; rinse and **dry thoroughly** before assembly.
5. Insert the Vent Filter back under the Spring to ensure it is secure.

## CLEANING THE CANISTER

The Canister should be washed periodically.

1. Wash the Bin in warm water using a mild soap. Avoid harsh or abrasive cleaners or sponges.  
Rinse thoroughly.

**TO AVOID DAMAGE, DO NOT PLACE CANISTER IN THE DISHWASHER.**

2. Let it air dry. Make sure the Canister is completely dry before putting it back into the EyeVac Pet.
3. Insert the assembled Canister following the instructions outlined in the User Manual

## STORAGE

1. Unplug unit and clean Canister and all Filters before storing.
2. Store EyeVac Pet indoors, in a clean, dry place.
3. Never store EyeVac Pet while it is still plugged in. Never wrap cord tightly around the appliance, use the Cord Storage area on the back of the EyeVac Pet unit. Do not put any stress on the cord where it enters the unit, as it could cause the cord to break.

**WARNING! TO REDUCE THE RISK OF ELECTRIC SHOCK, DO NOT USE OUTDOORS OR ON WET SURFACES.**

## TROUBLESHOOTING

Problem	Possible Cause	Possible Solution
EyeVac Pet will not turn on/no power	<ol style="list-style-type: none"> <li>1. Not firmly plugged in</li> <li>2. Control Dial is in Off position</li> <li>3. Pre-Motor Filter is not in correct position</li> <li>4. Broken switch</li> </ol>	<ol style="list-style-type: none"> <li>1. Plug in firmly</li> <li>2. Turn Control Dial to Manual or Auto position</li> <li>3. Ensure that Pre-Motor Filter is locked and flush with Canister Lid</li> <li>4. Remove Canister to check switch inside cavity above where Pre-Motor Filter is positioned. If switch is broken or missing, fill out a service Request Form" at "EyeVac.com/connect</li> </ol>
Does not pick up debris	<ol style="list-style-type: none"> <li>1. Dirt inlet is blocked</li> <li>2. Canister is full</li> <li>3. Debris may be too large for inlet</li> </ol>	<ol style="list-style-type: none"> <li>1. Turn Control Dial to the Off position</li> <li>2. Clean path of dirt inlet</li> <li>3. Empty Canister</li> <li>4. Clear large debris</li> </ol>
Sensor does not activate	<ol style="list-style-type: none"> <li>1. EyeVac Pet is not in Auto Mode</li> </ol>	<ol style="list-style-type: none"> <li>1. Turn Control Dial to the Auto position</li> </ol>
Suction not strong	<ol style="list-style-type: none"> <li>1. Filters may be dirty</li> </ol>	<ol style="list-style-type: none"> <li>1. Turn Control Dial to the Off position</li> <li>2. Clean Pre-Motor, Exhaust Filters or Vent Filter when needed</li> </ol>
Status Indicator Light blinking	<ol style="list-style-type: none"> <li>1. EyeVac Pet sensors have been shut off for 30 seconds which caused power to the motor to be shut off</li> </ol>	<ol style="list-style-type: none"> <li>1. Turn Control Dial to the Off position</li> </ol>
Canister Indicator light is On	<ol style="list-style-type: none"> <li>1. Canister is full</li> </ol>	<ol style="list-style-type: none"> <li>1. Turn Control Dial to the Off position</li> <li>2. Empty the Canister</li> <li>3. Clean all Filters</li> </ol>
Debris at Inlet before unit is powered on		<ol style="list-style-type: none"> <li>1. Turn Control Dial to the Manual position</li> <li>2. Activate unit manually</li> </ol>

## CORRECT DISPOSAL OF THIS PRODUCT



This marking indicates that this product should not be disposed with other household wastes. To prevent possible harm to the environment or human health from uncontrolled waste disposal, recycle it responsibly to promote the sustainable reuse of material resources. To return your used device, please use the return and collection systems or contact the retailer where the product was purchased. They can take this product for environmentally safe recycling. This appliance is a dry pick-up, Canister type vacuum cleaner for household and indoor use. Also, it is a general-purpose vacuum cleaner, which can be used for hard floor cleaning.



## LIMITED WARRANTY

One-Year Limited Warranty. What is covered: JPauJones, LPTM warrants to the first retail purchaser of this EyeVac Pet that should this product or any part be proved defective in materials or workmanship from the date of proof of purchase for a period of one (1) year, then it will be subject to the terms of this one-year limited warranty. Such defects will be replaced, or credit issued at JPauJones, LP's option, without charge for parts or labor directly related to the defect. Limitations and Exclusions: This warranty gives you specific legal rights and you may also have other rights which vary from state to state. This warranty does not apply to any cost incurred for removal or re-installation, or to any product or part thereof which has suffered through normal wear and tear, alteration, improper installation, physical abuse, misuse, neglect or accident. Nor does it cover defects caused by shipment to JPauJones, LP or repair or service of the product by anyone other than JPauJones, LP. Damage resulting from an unforeseen circumstance including but not limited to fire, flood, earthquake, and other natural causes will be excluded. This Limited warranty is in lieu of all other warranties, express or implied either in fact or by operations of law, statutory or otherwise, including, but not limited to any implied warranty of merchantability or fitness for a particular use. JPauJones, LP does not authorize any other person to assume any liability beyond the warranty herein described. In no event, whether based in contract or tort shall be liable for incidental, inconsequential, indirect, special or punitive damages of any kind from the use of this product. In no event shall be liable for damage in excess of the purchase price. EyeVac Pet is for commercial use.

For Warranty Service, submit a Service Request at <http://eyevac.com/connect/> or contact: JPauJones, LP, 7500 Rialto Blvd., Bldg. 1, Suite 122, Austin, TX 78735 or call 512-485-3050.

©2014 JPauJones, LP Intellectual Property. All rights reserved, JPauJones, LP, JPauJones, LP logo and all other marks contained herein are trademarks of JPauJones, LP Intellectual Property and/ or JPauJones, LP affiliated companies.

For service

# JPauJones™

JPauJones, LP  
7500 Rialto Blvd, Bldg. 1 STE. 122  
Austin, TX 78735  
(512) 485-3050

For service and general inquiries please visit [www.eyevac.com/connect](http://www.eyevac.com/connect)

Made in China

eye  vac<sup>®</sup>  
TOUCHLESS VACUUM