

eye  vac<sup>®</sup>  
AIR



**User Manual**

## IMPORTANT SAFETY INSTRUCTIONS

This electrical appliance must always be used according to the following safety instructions. Save these instructions as this manual contains important safety and operating information. A copy of the user manual can also be found on our website at <https://eyevac.com/faq/#manuals>. When using an electrical appliance, basic precaution should always be followed, including the following:

### READ ALL INSTRUCTIONS CAREFULLY BEFORE USING THIS APPLIANCE:

#### To reduce the risk of fire, electric shock or injury:

1. Always unplug the appliance when unattended or not in use.
2. Give electrical items space. Do not have any additional items too close to an electrical item.
3. Use electricity safely – unplug item if any malfunction is detected.
4. Regularly empty the canister of hair and debris.
5. Plug the appliance directly into a properly installed outlet. Do not use extension cords, surge protectors, adapters or converters.
6. Always press both the vacuum Power button and the air purifier Power button to the off position before unplugging EyeVac Air.
7. Always unplug the appliance before cleaning or servicing it. Do not unplug by pulling the cord; to unplug, grasp the plug, not the cord.
8. Do not let the EyeVac Air be used as a toy. Close attention is necessary when used near children. Do not use in Auto mode or leave appliance plugged in near children, infants or small animals.
9. Do not pull or carry the appliance by the cord. Do not run an appliance over the cord, close a door on the cord, or pull the cord around sharp edges or corners. Keep the cord away from heated surfaces.
10. Do not use the appliance if the cord or plug is damaged. Regularly inspect the appliance for damage.
11. Do not handle the plug or appliance with wet hands.
12. Do not use appliance on wet surfaces. Do not expose to rain.
13. Do not use appliance to dispose of water or damp materials such as mud, tile grout, plaster filler, or caulking. Do not use to pick up any liquid or wet objects.
14. Do not use appliance to vacuum up flammable or combustible liquids, such as gasoline. Do not use in areas where these liquids may be present.
15. Do not use this appliance to vacuum up flammable items such as cigarettes, matches or hot ashes.
16. Keep hair, loose clothing, and all parts of the body, especially fingers, away from openings and moving parts.
17. Do not put any objects into appliance openings or use with any openings blocked or plugged.
18. Do not use this appliance to pick up hard or sharp objects or other large surface litter. Pick these up by hand before vacuuming.
19. Do not operate without the Canister lid and filters properly in place.
20. Use the appliance only as described in this User Manual.
21. Turn appliance off and unplug before removing or replacing the Canister or filters.
22. If the appliance is not working as it should, visit <https://eyevac.com/connect/> and fill out the "Service Request" form. Do NOT attempt to repair, as it will invalidate your warranty.
23. When cleaning the outside of the appliance, wipe with a damp cloth to reduce the static electricity on the outer surface.
24. Other than cleaning and/or replacing filters as described in this Owner Manual, EyeVac Air is not user serviceable. Servicing is required by JPaulJones, LP to avoid damage to internal components.
24. EyeVac Air is appropriate and warrantied for HOME or COMMERCIAL USE.

**WARNING! To reduce the risk of electric shock do not use on wet surfaces. Do not expose to rain. Store indoors.**

## TABLE OF CONTENTS

Important Safety Instructions	02
Specifications	03
Description of EyeVac Air	04
About EyeVac Air Filter	05
Operating the Vacuum Instructions	06
Operating the Purifier Instructions	07
Air Purifier Function and Description	08
Vacuum Function and Description	09
User Maintenance Instructions	10-15
Troubleshooting Vacuum	16
Troubleshooting Air Purifier	16-17
Correct Disposal of this Product	17
Limited Warranty	18
Contact	18

## SPECIFICATIONS:

Vacuum Part
Item: Standard
Rated V Voltage/Frequency: 120V, 60Hz
Rated Power (W): 1000 W $\pm$ 10%
Noise Level (SPL dB): $\leq$ 82 dB
Machine Suction HS (KPa): $>$ 18
Induction Distance max. : 3" - 4"
Standby Power (W): P $\leq$ 1.5
Power Adapter Input: 100-240V~ 50/60Hz, 0.4A
Certificate: UL & CL
Rated Parameter: 120V 60Hz

Air Purifier Part
Item: Standard
Rated Parameter: 28 W
Rated Power (W): 28.7 W $\pm$ 10%
Noise Level (SPL dB): $\leq$ 54 dB
CADR (Particle): $\geq$ 60 m <sup>3</sup> /h
Speed: 2400 RPM $\pm$ 150 RPM
Dimensions: 14.17" x 8.6" x 20.12"

Operating Conditions
Temperature: -10 $^{\circ}$ -40 $^{\circ}$ C / 14 $^{\circ}$ -104 $^{\circ}$ F
Humidity: $\leq$ 85% RH

## DESCRIPTION OF EYEVAC AIR

Save These Instructions  
For Household and Commercial Use



**1. Control Panel**

**2. Inlet**

**3. Sensors**

**4. Vacuum Power button**

**5. Vacuum Manual Activation button**

**6. Vacuum Manual mode**

**7. Vacuum Auto mode**

**8. Canister Full Indicator**

**9. Air purifier Power button**

**10. Air purifier Activation button**

**11. Air purifier Manual mode**

**12. Air purifier Auto mode**

**13. Filter Indicator**

**14. Canister lid**

**15. Canister tabs**

**16. Canister**

**17. Pre-Motor Filter**

**18. Air Purification Filters**

**19. Activated Carbon Filter**

**20. Exhaust Filter Housing compartment**

**21. Air Filter Housing (inside lid)**

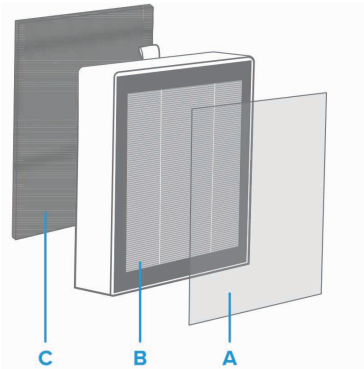
**22. Exhaust Filter**

**23. Vent Filter**

**24. Serial Number (on back of unit)**

## ABOUT EYEVAC AIR FILTER

Your EyeVac Air uses a 3-Stage Filtration System to purify your air and trap odors.



### A. Fine Preliminary Filter (Pre-Filter)

1. Captures large particles such as dust, lint, fibers, hair, and pet fur.
2. Maximizes the life of the True HEPA H-13 Filter by protecting it.

### B. H-13 True HEPA Filter

1. Filters at least 99.97% of airborne particles 0.3 micrometers ( $\mu\text{m}$ ) in diameter.
2. Filters small particles such as tiny dust particles, pet dander, dirt and more.

### C. Activated Carbon (Charcoal) Filter

1. Physically absorbs common home impurities and odors from pets, cooking, trash, smoke and more.

## GETTING STARTED

1. Remove EyeVac Air from packaging and set upright on any non-carpeted flooring. Remove packing tape from Exhaust Filter on the side of unit.
2. Plug unit into any standard 120V(US) AC electrical outlet.

**NOTE: EYEVAC AIR CANNOT BE USED WITH A CONVERTER OR ADAPTER**

3. EyeVac Air is appropriate and warranted for HOME or COMMERCIAL USE.

## GROUNDING INSTRUCTIONS

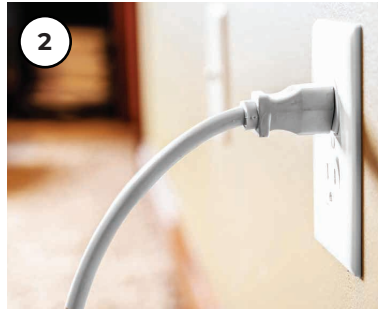
This appliance must be grounded. If it should malfunction or breakdown, grounding provides a path of least resistance for electric current to reduce the risk of electric shock. This appliance is equipped with a cord having an equipment-grounding conductor and grounding plug. The plug must be inserted into an appropriate outlet that is properly installed and grounded.

## OPERATING THE VACUUM: INSTRUCTIONS

**NOTE:** EyeVac Air cannot operate when the Power and/or Activate button is off.



1  
Open the Canister and ensure that the Pre-Motor Filter is aligned properly (locked into place and flush with the Canister lid). Then, close the Canister.



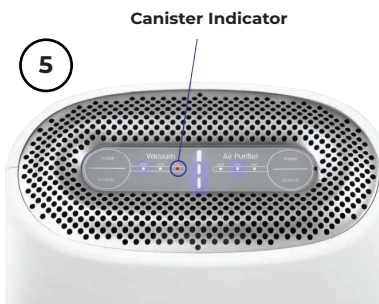
2  
Plug in your EyeVac Air in the desired location.



3  
Touch Power button to turn EyeVac Air on in Manual mode. Touch Power button again to select Auto mode. A blue LED indicates the unit is on.



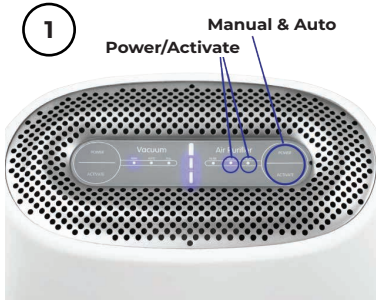
4  
Sweep debris over to the EyeVac Air. In Auto mode the sensor detects motion and activates vacuum. When EyeVac is in Manual mode press Activate button to turn on the vacuum.



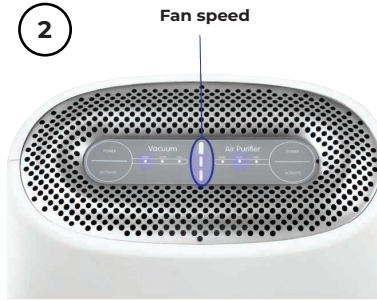
5  
As debris accumulates, the Canister will need to be emptied. A red LED indicates when it's time to empty the Canister.

## OPERATING THE AIR PURIFIER: INSTRUCTIONS

**NOTE: EyeVac Air cannot operate when the Power and/or Activate button is off. EyeVac Air purifies and deodorizes the air for large rooms up to 600 Sq Ft.**



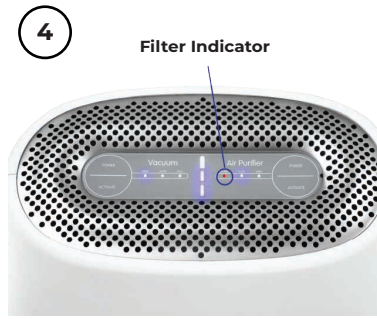
Touch Power button to turn EyeVac Air on in Manual mode. Touch Power button again to select Auto mode. A blue LED indicates the unit is on. Long press Power button for 2 seconds to run the air purifier permanently.



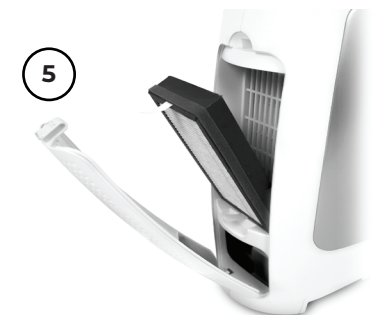
Touching the Activate button will run the air purifier for an 8 hour cycle. To adjust Fan speed, touch Activate button to cycle through Fan speed settings (low, medium & high).



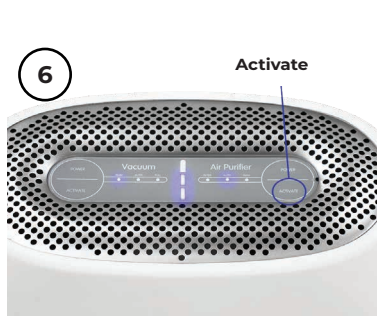
When vacuum is activated by debris being swept to the EyeVac Air, air purification will automatically start for a 4 hour cycle.



A red LED indicates when it's time to change the Air Filters.



Replace Air Filters on both the right and left side of EyeVac Air. See ["Replacing the Air Purification Filters"](#) instructions on [pg. 10](#).



Once replaced, long press Activate button for 5 seconds to reset the Air Filter timer and to turn off the Filter Indicator.

## AIR PURIFIER FUNCTION DESCRIPTION

Button or Function:	Operation:	Detail Description
Power	Turn on/ Switch to Auto/Turn off	<p>Power button</p> <ol style="list-style-type: none"> <li>When the EyeVac Air is in Standby mode, touching the Power button will turn the EyeVac Air on in Manual mode.</li> <li>When the EyeVac Air is on in Manual mode, touching the Power button will switch the unit to Auto mode.</li> <li>When the EyeVac Air is on Auto mode, touching the Power button will turn the EyeVac Air off.</li> <li>Long press Power button for 2 seconds to run the air purifier permanently.</li> </ol>
Activate	Manual mode	<p>When in Manual mode, touching the Activate button will first activate the air purifier for an 8 hour cycle. Touch the Activate button again to:</p> <ol style="list-style-type: none"> <li>Cycle through Fan speed (L1-L2-L3) .</li> <li>A change in fan speed will be accompanied by the appropriate change in middle LED bar illumination.</li> </ol>
	Standby Mode	<p>When in Standby mode, touching the Activate button will turn the unit on in Manual mode (L1).</p> <ol style="list-style-type: none"> <li>Fan speed is changed by touching Activate button.</li> <li>A change in fan speed will be accompanied by the appropriate change in middle LED bar illumination.</li> </ol>
Auto	Auto Mode	<p>In Auto mode:</p> <ol style="list-style-type: none"> <li>When the infrared sensor at the bottom of EyeVac Air detects an object 3-4" in front of it and activates the vacuum, the air purifier will also automatically activate for a 4-hour cycle.</li> <li>When EyeVac Air detects object, the fan automatically goes to L2. The middle LED bar illuminates accordingly.</li> </ol>
Filter	Check/ Reset Filter	<p>Reset the Air Filter timer when the Filter Indicator LED glows red.</p> <ol style="list-style-type: none"> <li>Replace the Air Filter. See <a href="#">"Replacing the Air Purification Filters "</a> instructions on <a href="#">pg. 10</a>.</li> <li>Activate the air purifier.</li> <li>Long touch air purifier Activate button for 5 seconds to reset the timer to 0.</li> <li>The Filter Indicator LED will turn off when successfully reset.</li> </ol>

## VACUUM CLEANER FUNCTION DESCRIPTION

Items:	Operation:	Detail Description
Power on/off	Turn on/off and Auto/Manual	<p>a. Touch the Power button to turn on EyeVac Air on in Manual mode.</p> <p>b. When the EyeVac is on in Manual mode, touching the Power button will switch the unit to Auto mode.</p> <p>c. When the EyeVac Air is on Auto mode, touching the Power button will turn the EyeVac Air off.</p>
Activate	Manual mode	<p>Touch Power button to switch to Manual or Auto mode.</p> <p>If in Manual Mode:</p> <p>a. Activate button runs vacuum for 8 seconds / 1 cycle.</p> <p>b. Touch Activate button as needed until all debris has been removed.</p>
Auto	Auto Mode	<p>Touch Power button to switch to Manual or Auto mode.</p> <p>If in Auto mode:</p> <p>Auto mode, runs for 8 seconds per cycle. When the sensor continuously detects objects, EyeVac Air vacuum will continue running more cycles up to max run time of 48 seconds (6 cycles), then turn off automatically.</p>
Full	Canister full	<p>A red LED appears when the Canister is full or the suction inlet is blocked.</p> <p>a. Be sure to empty the Canister when Full LED is illuminated.</p> <p>b. See <a href="#">“Emptying the Canister”</a> instructions on <a href="#">pg. 12</a>.</p>

<p><b>Remarks</b></p>	<p>1. When the Infrared Sensor that is located at the bottom of the EyeVac Air detects objects 3-4” the air purifier is automatically activated. You can disable automatic vacuum activation by touching the Power button and cycling to Manual mode.</p> <p>2. If EyeVac Air runs for maximum run time (48 seconds) the Auto LED will flicker.</p>
-----------------------	---

## USER MAINTENANCE INSTRUCTIONS

### Replacing the Air Purification Filters



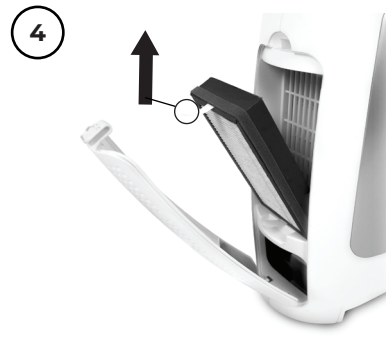
Starting with the Vacuum, touch the Power button, and cycle to the off position. On the air purifier side, touch the Power button and cycle to the off position. Then, unplug the EyeVac Air.



Locate the Filter Housing compartment on both the left & right sides of the EyeVac Air.



Press tab down and pull the Air Filter Housing compartment away from the body of the EyeVac Air to locate the Air Filter.



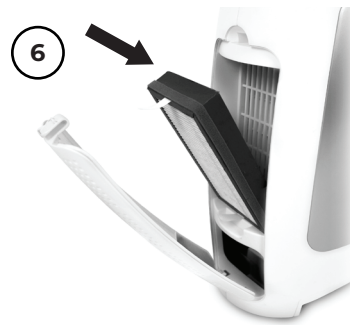
Remove the Air Filter by pulling the tab out. Then, pull the Air Filter straight up and out of the Filter Housing compartment.

## USER MAINTENANCE INSTRUCTIONS

### Replacing the Air Purification Filters



Remove Air Filters (2) from the plastic packaging.



Insert Air Filter into the Filter Housing compartment with the front side facing out.



Close the Filter Housing compartment. Repeat steps on opposite side.



Once replaced, long press Activate button for 5 seconds to reset the Air Filter timer and to turn off the Filter Indicator.

## USER MAINTENANCE INSTRUCTIONS

### Emptying the Canister

1. Starting with the vacuum side, touch the Power button, and cycle to the off position. On the air purifier side, touch the Power button and cycle to the off position. Then, unplug the EyeVac Air.
2. Pull the Canister outward from the front of the Bin Cavity of the Canister. Grasp the Canister grip firmly and lift it out and away from the body of the EyeVac Air.
3. Holding the Canister firmly with one hand, grasp the Canister lid handle with the other hand and pull the lid straight up and out to remove.
4. Turn the Canister upside down over a trash can. Make sure you empty all dirt and debris from inside and below the Bin. To ensure that all the dirt spills out, tap the side of the Canister gently against the edge of the trash can. Re-attach the Canister lid to the top of the Canister.

### Cleaning the Canister

The Canister should be washed periodically.

1. Starting with the vacuum side, touch the Power button, and cycle to the off position. On the air purifier side, touch the Power button and cycle to the off position. Then, unplug the EyeVac Air.
2. Wash the Bin in warm water using a mild soap. Avoid harsh or abrasive cleaners or sponges.

**TO AVOID DAMAGE, DO NOT PLACE CANISTER IN THE DISHWASHER.**

3. Let it air dry. Make sure the Canister is completely dry before putting it back into the EyeVac Air.
4. Insert the assembled Canister following the instructions outlined in the User Maintenance Instructions

**IMPORTANT! Other than cleaning the Pre-Motor Filter and replacing the Exhaust Filter Holder, as described in this User Manual, this EyeVac Air is not user-serviceable. There are no user-serviceable parts inside the unit. Servicing by our Authorized Service Center is required to avoid damage to internal components.**

### Cleaning The EyeVac Air

1. Starting with the vacuum side, touch the Power button, and cycle to the off position. On the air purifier side, touch the Power button and cycle to the off position. Then, unplug the EyeVac Air.
2. Clean sensors, inlet area, Canister, Canister lid and Canister Bin Cavity with a damp rag or towel. Do not use soap or alcohol to clean sensors.
3. After all parts are fully dried, insert the assembled Canister with lid fitting snugly into position and Pre-Motor Filter locked into place and flush with Canister lid. The 2 grooves in the bottom of the bin fit easily over the rod in the front of the unit. Grasp the Canister grip and lock the Canister back into position.

**NOTE: Make sure all parts are completely dry before reassembly.**

**HEALTH TIP: If you suffer from allergies or asthma, take the Canister outdoors to empty. As you empty the dirt into the trash can, gently tap the Canister against the side of the can to remove loose debris.**

## USER MAINTENANCE INSTRUCTIONS

### Taking out the Pre-Motor Filter

1

Air Purifier: Power/Activate  
Vacuum: Power/Activate



Starting with the vacuum side, touch the Power button, and cycle to the off position. On the air purifier side, touch the Power button and cycle to the off position. Then, unplug the EyeVac Air.

2



Pull the Canister outward from the front of the Bin Cavity. Grasp the Canister grip firmly and lift it out and away from the body of EyeVac Air. Locate the Pre-Motor Filter.

3



Remove the Pre-Motor Filter by grasping the Pre-Motor Filter handle and turn counter-clockwise to the unlock position. Pull Pre-Motor Filter straight up and out of the top of the Canister.

## USER MAINTENANCE INSTRUCTIONS-CONTINUED

### Cleaning the Pre-Motor Filter

To maintain optimal performance the Pre-Motor Filter will need to be cleaned whenever the suction is not strong. The Pre-Motor Filter must be clean and free of elements, otherwise flow of air may be hindered.

1. Starting with the vacuum side, touch the Power button, and cycle to the off position. On the air purifier side, touch the Power button and cycle to the off position. Then, unplug the EyeVac Air.
2. Remove the Pre-Motor Filter and rinse under running water to clean. If needed a mild soap and soft bristled brush can also be used.

#### **IMPORTANT! DRY THOROUGHLY BEFORE USE.**

3. Slide the Pre-Motor Filter back into the top of the Canister. Rotate clockwise to the "lock" position. Put the Canister back into place.

**Note:** If cleaning the filter does not restore it to the original state, get a replacement at [eyevac.com/accessories](http://eyevac.com/accessories). Make sure that it fits snugly in the Filter Holder.

#### **IMPORTANT! NEVER OPERATE THE EYEVAC AIR WITHOUT THE PRE-MOTOR FILTER PROPERLY IN PLACE.**

### Cleaning the Exhaust Filter

1. Starting with the vacuum side, touch the Power button, and cycle to the off position. On the air purifier side, touch the Power button and cycle to the off position. Then, unplug the EyeVac Air.
2. The Exhaust Filter Holder slides up and out of its housing on the right and left side of EyeVac Air.
3. Gently pull the Exhaust Filter out of the Filter Holder.
4. Tap Exhaust Filter gently against trash container to free and eliminate excess dirt and debris.
5. To clean the Exhaust Filter, wash in mild soap and water; rinse and dry thoroughly before assembly.
6. Slide the Filter Holder back into the unit with the Exhaust Filter facing outwards.

**Note:** If cleaning the filter does not restore it to the original state, get a replacement at [eyevac.com/accessories](http://eyevac.com/accessories).

#### **IMPORTANT! NEVER OPERATE EYEVAC AIR WITHOUT THE EXHAUST FILTER AND FILTER HOLDER PROPERLY IN PLACE.**

### Cleaning the Vent Filter

1. Starting with the vacuum side, touch the Power button, and cycle to the off position. On the air purifier side, touch the Power button and cycle to the off position. Then, unplug the EyeVac Air.
2. Remove the Canister by pulling the top of the Canister outward. The Vent Filter is located underneath it.
3. Pull orange O ring up and away from vent filter gasket to remove.
4. To clean the Filter, wash in mild soap and water; rinse and **dry thoroughly** before assembly.
5. To insert, push orange O ring back into the vent gasket.

**Note:** If cleaning the filter does not restore it to the original state, get a replacement at [eyevac.com/accessories](http://eyevac.com/accessories).

## USER MAINTENANCE INSTRUCTIONS-CONTINUED

### Replacing the HEPA Filter

1. EyeVac Air Filter will need to be changed every ~3,000 hours to maintain the highest air quality.
2. When it is time to change the filter the Filter Indicator LED will illuminate red. The Filter Indicator LED will turn on in 6-8 months depending on how much you use EyeVac Air.
3. Reset Filter Indicator's timer after changing the Air Filters.
4. To maintain the performance of your air purifier, only use official EyeVac Filters. To buy replacement filters, visit [EyeVac.com](http://EyeVac.com).

### Storage

1. Starting with the vacuum side, touch the Power button, and cycle to the off position. On the air purifier side, touch the Power button and cycle to the off position. Then, unplug the EyeVac Air.
2. Clean Canister and all filters before storing.
3. Store EyeVac Air indoors, in a clean, dry place.
4. Never store EyeVac Air while it is still plugged in. Never wrap cord tightly around the appliance; use the Cord Storage area on the back of the EyeVac Air. Do not put any stress on the cord where it enters the EyeVac Air as it could cause the cord to break.

**WARNING! TO REDUCE THE RISK OF ELECTRIC SHOCK, DO NOT USE OUTDOORS OR ON WET SURFACES.**

## TROUBLE SHOOTING

Problem	Possible Cause	Possible Solution
EyeVac Air will not turn on or respond to button controls.	<ol style="list-style-type: none"> <li>1. EyeVac Air is not plugged in.</li> <li>2. EyeVac Air is in off position.</li> <li>3. The Filters are not in correct position.</li> <li>4. There is no power in wall plug.</li> <li>5. A Blown house fuse or tripped circuit breaker.</li> </ol>	<ol style="list-style-type: none"> <li>1. Ensure that all filters are locked and flush in place.</li> <li>2. Plug in firmly.</li> <li>3. Touch Power button to Manual or Auto position.</li> <li>4. Check house fuse or circuit breaker.</li> <li>5. Have a qualified licensed electrician replace house fuse or reset circuit breaker.</li> <li>6. Remove the Canister to check switch inside cavity above Pre-Motor filter.</li> </ol>

### Vacuum:

EyeVac Air does not pick up debris.	<ol style="list-style-type: none"> <li>1. The Inlet is blocked by debris.</li> <li>2. The Canister is full.</li> <li>3. The debris may be too large for inlet.</li> </ol>	<ol style="list-style-type: none"> <li>1. Touch vacuum Power button and cycle to the off position.</li> <li>2. Clean path of dirt near inlet.</li> <li>3. Empty the Canister.</li> <li>4. Clear any large debris in front of inlet.</li> </ol>
The Sensor does not activate.  Vacuum suction not strong.	<ol style="list-style-type: none"> <li>1. EyeVac Air is not in Auto mode.</li> <li>1. The Pre-Motor Filter may need to be cleaned.</li> </ol>	<ol style="list-style-type: none"> <li>1. Touch Power button and cycle to the Auto mode.</li> <li>1. Touch vacuum Power button and cycle to the off position.</li> <li>2. Clean all filters with the exception of the HEPA Filters as needed.</li> </ol>
The Status Indicator LED is blinking.	<ol style="list-style-type: none"> <li>1. The EyeVac Air sensors have been shut off for 30 seconds which caused power to the motor to shut off.</li> </ol>	<ol style="list-style-type: none"> <li>1. Touch Power button and cycle to the off position.</li> <li>2. Clean all filters with the exception of the HEPA Filters as needed.</li> <li>3. Clean sensors with warm water and Q-tip. <b>DO NOT USE ALCOHOL OR SOAP.</b></li> </ol>
The Canister Full Indicator LED is on.	<ol style="list-style-type: none"> <li>1. The Canister is full.</li> </ol>	<ol style="list-style-type: none"> <li>1. Touch vacuum Power button and cycle to the off position.</li> <li>2. Empty the Canister.</li> <li>3. Clean all filters with the exception of the HEPA Filters as needed.</li> </ol>
Debris is at inlet before unit is turned on.	<ol style="list-style-type: none"> <li>1. The EyeVac Air is not in Auto mode.</li> </ol>	<ol style="list-style-type: none"> <li>1. Touch Power button and cycle to the Manual position.</li> <li>2. Activate EyeVac Air manually.</li> </ol>

**If your problem is not listed, please contact Customer Support.**

## TROUBLESHOOTING-CONTINUED

### Air Purifier

Airflow is significantly reduced.	<ol style="list-style-type: none"> <li>1. The Filters are not in correct position.</li> <li>2. The Fan Speed is on low setting.</li> <li>3. The Pre-Motor Filter may be clogged by large particles, such as hair or lint, blocking air flow.</li> </ol>	<ol style="list-style-type: none"> <li>1. Ensure that all filters are locked and flush in place.</li> <li>2. Increase fan speed by touching the Activate button.</li> <li>3. With dry cloth gently remove large particles on Air Filter and / or Exhaust Filter.</li> <li>4. Make sure there's at least 15 in / 38 cm of clearance on all sides of the air purifier</li> <li>5. Replace the HEPA Filters.</li> </ol>
Air purifier makes an unusual noise while the fan is on.	<ol style="list-style-type: none"> <li>1. The Filters are not in correct position.</li> <li>2. The EyeVac Air is not on appropriate surface.</li> <li>3. The Air Filters needs to be changed.</li> </ol>	<ol style="list-style-type: none"> <li>1. Ensure that all filters are locked and flush in place.</li> <li>2. Make sure the air purifier is operating on a hard, flat floor with even surface .</li> <li>3. Replace Air the Filters.</li> <li>4. The air purifier may be damaged, or a foreign object may be inside the canister. Stop using the EyeVac Air and contact Customer Support. Do not try to repair the EyeVac Air.</li> </ol>
Poor air purification quality.	<ol style="list-style-type: none"> <li>1. Filters are not in correct position.</li> <li>2. The Pre-Motor Filter may be clogged by large particles, such as hair or lint, blocking air flow.</li> </ol>	<ol style="list-style-type: none"> <li>1. Ensure that all filters are locked and flush in place.</li> <li>2. With dry cloth gently remove large particles on Air Filter and / or Exhaust Filter.</li> <li>3. Replace the Air Filters.</li> <li>4. Close doors and windows while using the air purifier.</li> <li>5. Do not use your purifier in an area with high humidity or while diffusing essential oils.</li> <li>6. Contact Support for assistance.</li> </ol>
Filter Indicator LED still on after replacing HEPA Filters.	<ol style="list-style-type: none"> <li>1. If the air purifier is not used often, it may take longer to turn off.</li> </ol>	<ol style="list-style-type: none"> <li>1. See "<a href="#">Replacing the Air Purification Filters</a>" Instructions on <a href="#">pg. 10</a>.</li> </ol>
The Air purifier runs intermittently.	<ol style="list-style-type: none"> <li>1. Air purifier run time is not set.</li> <li>2. Air purifier is being activated through vacuum usage for 4 hour cycles.</li> </ol>	<ol style="list-style-type: none"> <li>1. Touch Activate button to run the air purifier for an 8 hour cycle.</li> <li>2. Long press Power button for 2 seconds to run the air purifier permanently.</li> </ol>

If your problem is not listed, please contact Customer Support.

### CORRECT DISPOSAL OF THIS PRODUCT



This marking indicates that this product should not be disposed with other household wastes. To prevent possible harm to the environment or human health from uncontrolled waste disposal, recycle it responsibly to promote the sustainable reuse of material resources. To return your used device, please use the return and collection systems or contact the retailer where the product was purchased. They can take this product for environmentally safe recycling. This appliance is a dry pick-up, canister type vacuum cleaner and air purifier for indoor household and/or commercial use. It is a general-purpose vacuum cleaner, which can be used for hard floor cleaning. This appliance is an air purifier and deodorizer.

## LIMITED WARRANTY

Two-Year Limited Warranty on Unit / Five-Year Warranty on Parts and Accessories.

What is covered: JPaulJones, LP™ warrants to the first retail purchaser of an EyeVac that, should this product or any part be proved defective in materials or workmanship from the date of proof of purchase for a period of two (2) years for the unit, and five (5) years for parts and accessories, then it will be subject to the terms of this limited warranty. Such defects will be replaced, or credit issued at JPaulJones, LP's option, without charge for parts or labor directly related to the defect. Limitations and Exclusions: This warranty gives you specific legal rights and you may also have other rights which vary from state to state. This warranty does not apply to any cost incurred for removal or re-installation, or to any product or part thereof which has suffered through normal wear and tear, alteration, improper installation, physical abuse, misuse, neglect or accident. Nor does it cover defects caused by shipment to JPaulJones, LP or repair or service of the product by anyone other than JPaulJones, LP. Damage resulting from an unforeseen circumstance including but not limited to fire, flood, earthquake, and other natural causes will be excluded. This Limited warranty is in lieu of all other warranties, express or implied either in fact or by operations of law, statutory or otherwise, including, but not limited to any implied warranty of merchantability or fitness for a particular use. JPaulJones, LP does not authorize any other person to assume any liability beyond the warranty herein described. EyeVac Air appliances can be used in both home and commercial environments.

For Warranty Service, submit a Service Request at <http://eyevac.com/connect/> or contact:

JPaulJones, LP, 7500 Rialto Blvd., Bldg. 1, Suite 110, Austin, TX 78735 or call 512-485-3050.

©2014 JPaulJones, LP Intellectual Property. All rights reserved, JPaulJones, LP, JPaulJones, LP logo and all other marks contained herein are trademarks of JPaulJones, LP Intellectual Property and/or JPaulJones, LP affiliated companies.

# JPAULJONES™

JPaulJones, LP  
7500 Rialto Blvd, Bldg. 1 STE. 110  
Austin, TX 78735  
(512) 485-3050

For service and general inquiries please visit [www.eyevac.com/connect](http://www.eyevac.com/connect)

eye  vac<sup>®</sup>  
A I R